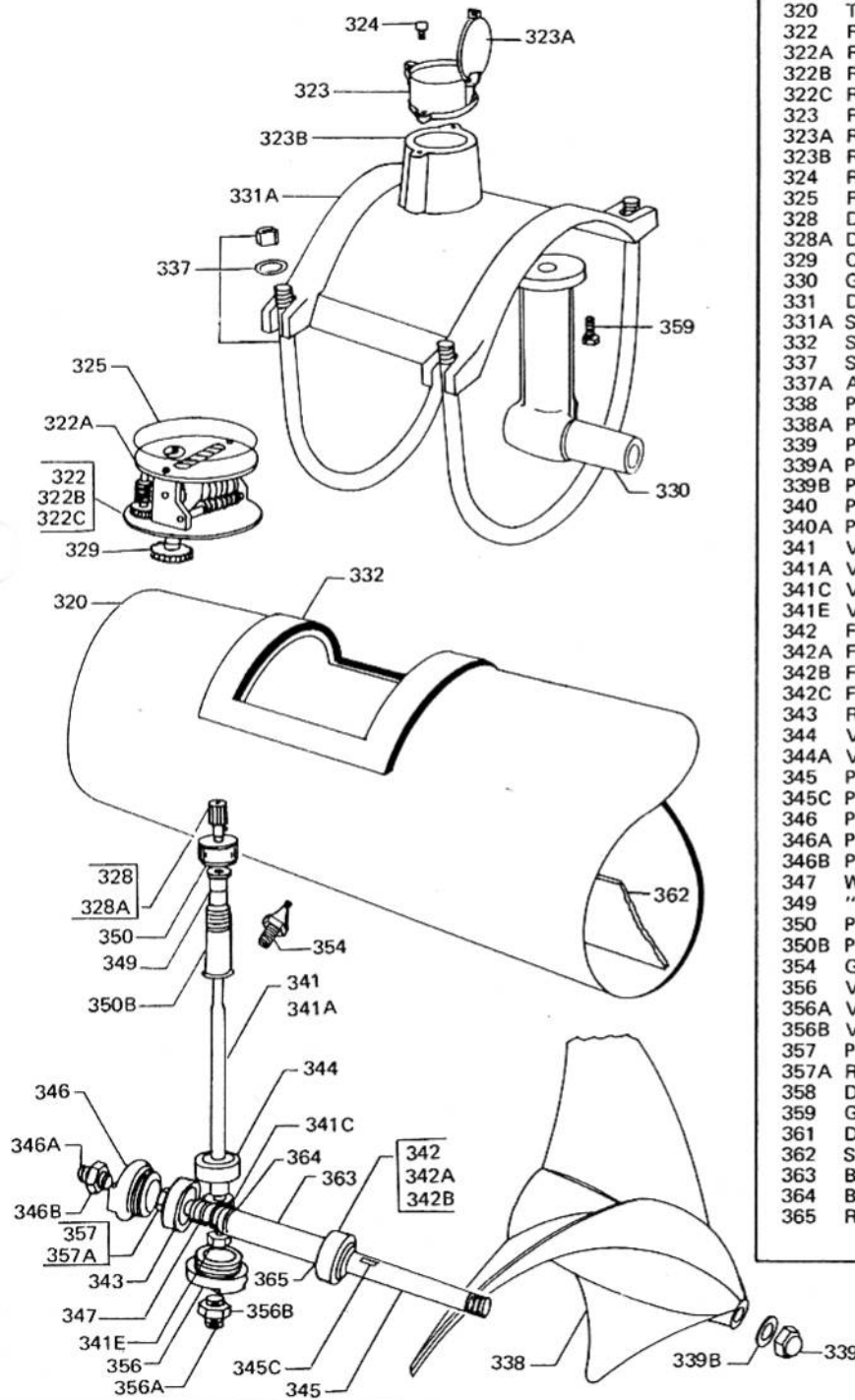


**SERIES 300  
IRRIGATION METERS  
AND ACCESSORIES**

**LOW PRESSURE LINE METERS**  
4" thru 72"

IDS-305  
033720

Supersedes Bulletin 305 of March 1971



ITEM	DESCRIPTION
320	Tube Assembly, Plain End
322	Register Clock Assembly (specify reg.)
322A	Register Clock Dial (specify reg.)
322B	Register Clock Assembly Reverse Dial Mounted (specify reg.)
322C	Register Clock Assembly 10:1 (specify reg.)
323	Register Box and Cover Assembly
323A	Register Box Lid
323B	Register Box Gasket
324	Register Box Screw
325	Register Box Glass
328	Drive Change Gear 5 thru 16 teeth (specify # teeth)
328A	Drive Change Gear 17 thru 45 teeth (specify # teeth)
329	Clock Change Gear (specify # teeth)
330	Gear Box
331	Dummy Saddle
331A	Saddle Assembly
332	Saddle Gasket, "O" Ring or Flat
337	Saddle Bolt, Nut and Washer Assembly
337A	Anchor Bar
338	Propeller, Plastic
338A	Propeller, Stainless Steel
339	Propeller Shaft Nut
339A	Propeller Shaft Nut (conical)
339B	Propeller Shaft Washer
340	Propeller Shaft Assembly Complete - single row
340A	Propeller Shaft Assembly Complete - double row
341	Vertical Shaft and Gear Assembly
341A	Vertical Shaft Assembly - less gear
341C	Vertical Shaft Gear
341E	Vertical Shaft Lock Nut
342	Front Ball Bearing - single row
342A	Front Ball Bearing - double row
342B	Front Rubber Bearing
342C	Front Rubber Bearing Sleeve (for use with # 342B)
343	Rear Ball Bearing
344	Vertical Shaft Ball Bearing
344A	Vertical Shaft Ball Bearing, Lower plug
345	Propeller Shaft
345C	Propeller Shaft Key
346	Propeller Shaft Plug Assembly
346A	Propeller Shaft Plug Thrust Screw
346B	Propeller Shaft Plug Lock Nut
347	Worm
349	"O" Ring Packing Assembly
350	Packing Nut
350B	Packing Gland Body
354	Grease Fitting
356	Vertical Shaft Plug Assembly
356A	Vertical Shaft Plug Thrust Screw
356B	Vertical Shaft Plug Lock Nut
357	Propeller Shaft Thrust Nut
357A	Rear Bearing Lock Nut
358	Drop Pipe
359	Gear Box Screws
361	Drive Clevis Assembly
362	Straightening Vane Assembly
363	Bearing Spacer Tube
364	Bearing Spacer Tube Washer
365	Retainer, Front Bearing

FIG. 1


4" to 14"

(see back page for larger sizes)

**Sparling Instruments, Inc.**

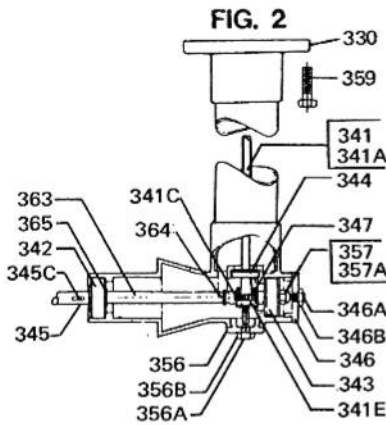
4097 N. Temple City Blvd. • El Monte, CA 91731-1089 USA

Phone (626) 444-0571 • Fax (626) 444-2314

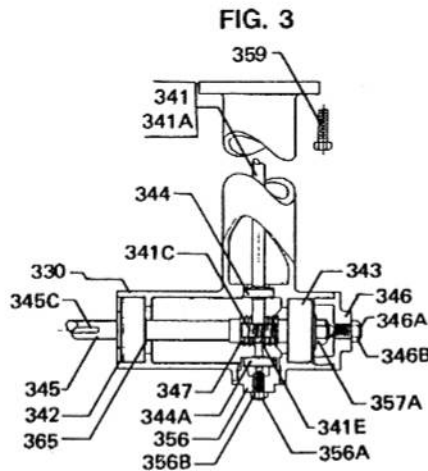
Litho in U.S.A. Sparling and  are Trademarks.



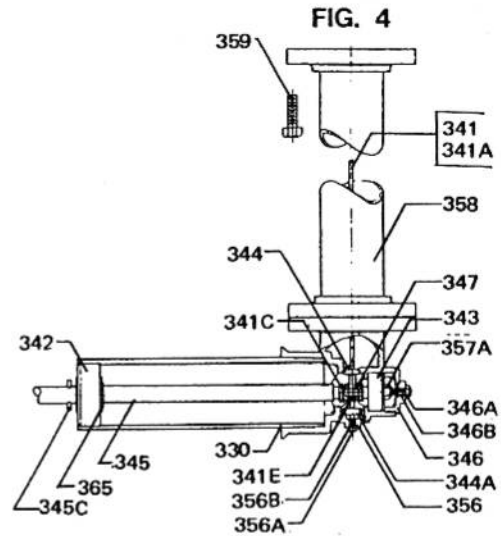
**GEAR BOX ASSEMBLIES**



16" to 30"



36" to 42"



48" to 72"

**MAINTENANCE INSTRUCTIONS**

Low pressure line meters should be greased every 90 days of actual operation time, with Lubriplate #105. Remove the meter from the line once each year and inspect it for wear, damage, etc. The front bearing is normally the first part to wear. It is normally a little loose, however, to allow sand and grit to pass through with a minimum of wear.

**GETTING THE MOST FROM SPARLING SERVICES**

**1. FACTORY SERVICES**

Complete Factory Meter Service, Overhaul and Performance Test is available. Contact your Sparling Representative for service rates.

**2. PACKAGING FOR SHIPPING**

When returning low pressure Meterhead to factory, bolt unit complete into wooden box securely. If meter is permitted to move in box freely, damage might occur and as a result, repair costs will be higher.

**DO NOT SHIP VIA PARCEL POST**

Methods such as air express, United Parcel etc., have proven good. Mark "Fragile Instrument."

**3. ORDERING PARTS**

**WHEN ORDERING PARTS, PLEASE INCLUDE THE FOLLOWING INFORMATION:**

1. Meter Serial No.
2. Meter Size
3. Correct Item Number
4. Part Description
5. Mention IDS-305

